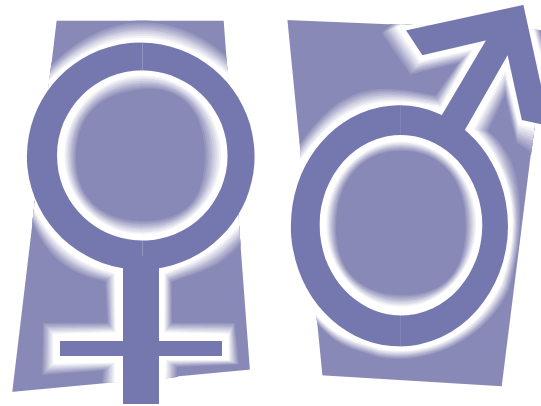


Healthy Baby Prenatal Program

SMART Local 36 Welfare Fund is proud to continue our prenatal care program for its members. Designed to help our expectant moms have peace of mind and increase your chances of delivering a happy, healthy baby.

The Healthy Baby prenatal program has one mission....“To deliver healthy babies to healthy moms”.



SMART LOCAL 36 WELFARE FUND

Mary Beth Cyliax, RN, CCM
314-652-8175 ext 310
mbcyliax@sheetmetal36.org
Fax: 314-652-8494

2319 Chouteau Ave Ste. 300 St. Louis, MO 63103

Healthy Baby Prenatal Program

Giving our smallest members the
biggest future...



“TO DELIVER HEALTHY BABIES TO HEALTHY MOTHERS”

WHO WE SERVE...

Our Prenatal program serves SMART Local 36 Welfare Fund members and their spouses.

PROGRAM FEATURES

- * Free prenatal vitamins through LDI Pharmacy Services
- * Healthy Baby gift basket following delivery
- * Mom and baby's annual deductible is waived if Healthy Baby Program through our RN Case Manager is completed
- * Free case management services
- * Your Guide to a Healthy Pregnancy booklet sent to the mother



PRENATAL CARE

SMART Local 36 Welfare Fund's Staff will notify our nurse case manager to enroll you in the prenatal program. Enrollment begins with member contact, obtaining prenatal vitamins, or physician referral. To start the program, our nurse will contact the member to obtain information for a risk assessment, lifestyle evaluation, and to establish a family history. This completes the overall health history on the mother and enables our nurse to recognize any risks in the pregnancy. Our nurse will contact the physician and advise them of the member's prenatal care team if necessary. This establishes direct contact for our nurse if there are any complications, concerns, or changes to the mother's prenatal care.



We ask that you email our nurse after every OBGYN or high-risk visit and/or ultrasound throughout your pregnancy to help evaluate the baby's development, answer any questions you may have, and assess any risk or changes with your pregnancy. You are welcome to contact me by phone at any time questions.

DELIVERY...

Our nurse case manager is available to answer questions throughout your pregnancy. At delivery, if the participant is compliant with the Health Baby Prenatal Program, the fund will send a final gift basket with special gifts for your baby. The fund will also waive the mom and baby's annual deductible for that calendar year.



CONTINUED CARE...

Our nurse will assist you with any questions you have after your baby is born. You can submit a receipt up to 6 months following the birth of baby for a breast pump for reimbursement if you choose to breast feed your baby.